

# **700 EXECUTIVE BOULEVARD**

## **Elmsford, New York**



**42,500 Square Feet**  
***INDUSTRIAL/WAREHOUSE AVAILABLE***

### **PROPERTY FEATURES**

- 3 Loading Docks
- 1 Drive-In Door
- 16-Foot Clear
- Includes 6,000 sq. ft. Office Space
- Access to I-87, I-287, Saw Mill River Road (Route 9A), Sprain Brook and Bronx River Parkways
- Bus Service to Northern and Southern Westchester

**MANUFACTURING**

**FLEX**

**STORAGE**



Rachel Greenspan  
[rgreenspan@ghpoffice.com](mailto:rgreenspan@ghpoffice.com)

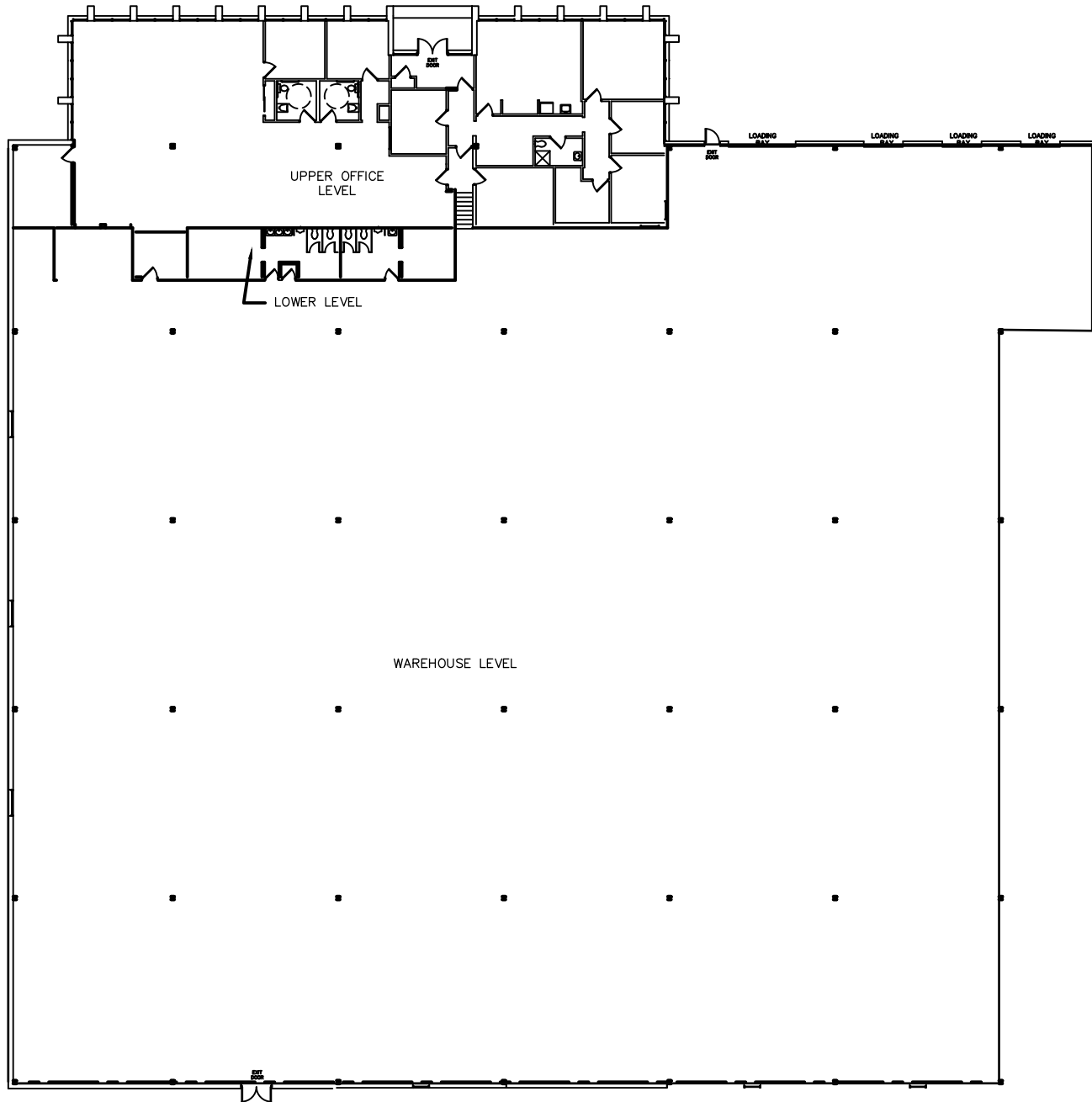
914.642.9300  
[ghpoffice.com](http://ghpoffice.com)

Brendan Hickey  
[bhickey@ghpoffice.com](mailto:bhickey@ghpoffice.com)

We Own. We Manage. We Lease.

# 700 EXECUTIVE BOULEVARD

## INDUSTRIAL/WAREHOUSE



Rachel Greenspan  
[rgreenspan@ghpoffice.com](mailto:rgreenspan@ghpoffice.com)

914.642.9300  
[ghpoffice.com](http://ghpoffice.com)

Brendan Hickey  
[bhickey@ghpoffice.com](mailto:bhickey@ghpoffice.com)

We Own. We Manage. We Lease.